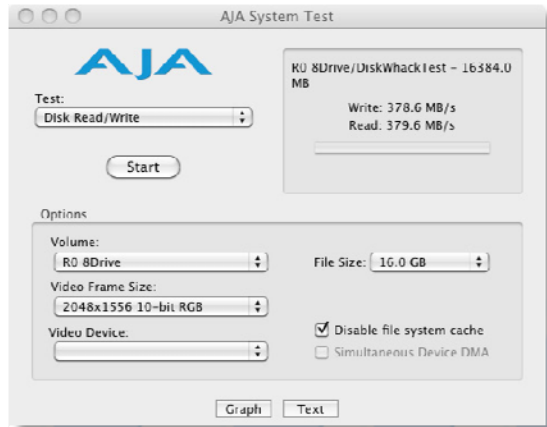


# Dulce PRO FCa Performance Tests

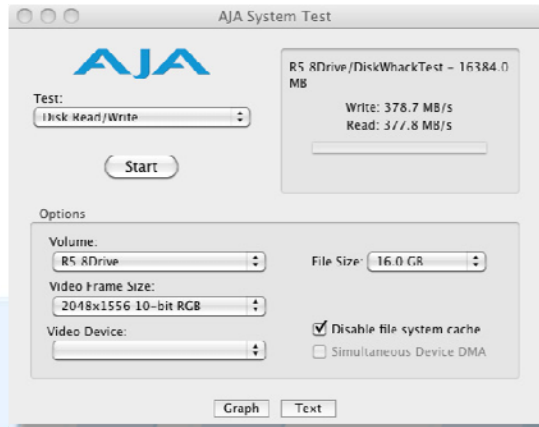
**Date:** June 3, 2010  
**Test System:** Mac PRO Dual 3GHz Quad-Core Intel Xeon  
**Operating System:** Mac OSX 10.6.2  
**Host Adapter:** Q-Logic QLE2562 8Gb Fiber Channel  
**Disk Drive's:** Hitachi 1TB

8 Drive's (Single FC RAID Controller, Single Port on Q-Logic HBA)

RAID 0

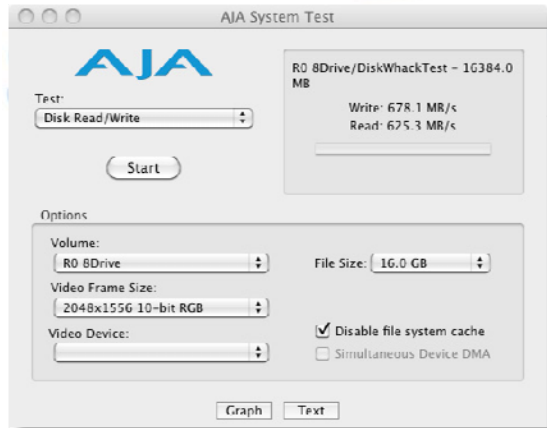


RAID 5

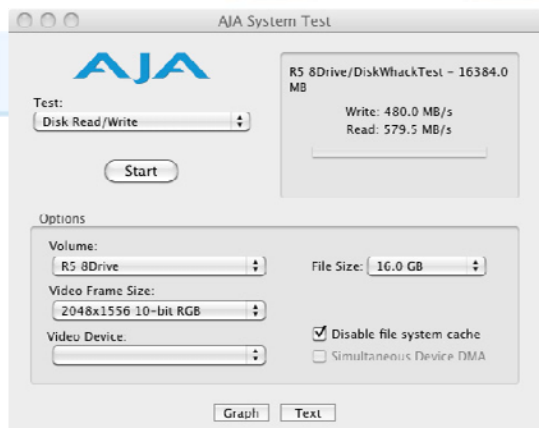


8 Drive's (Single FC RAID Controller, Dual Port on a Single Q-Logic HBA)

RAID 0

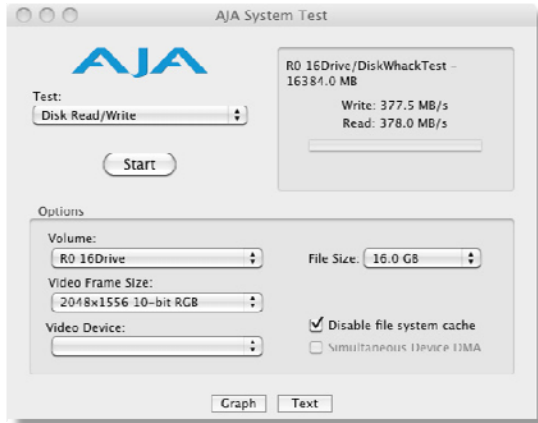


RAID 5

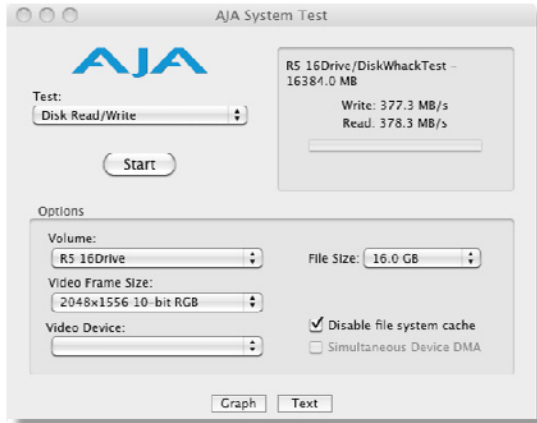


16 Drive's (Single FC RAID Controller, Single Port on Q-Logic HBA)

RAID 0

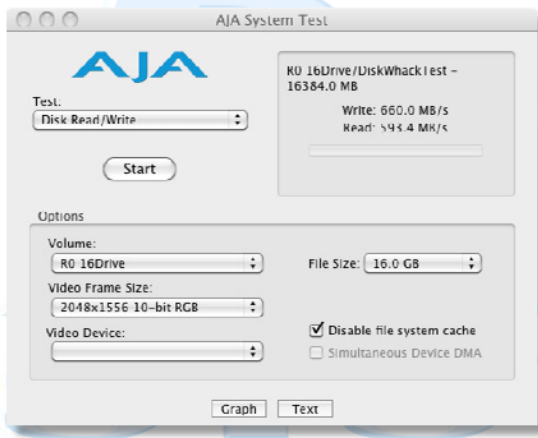


RAID 5

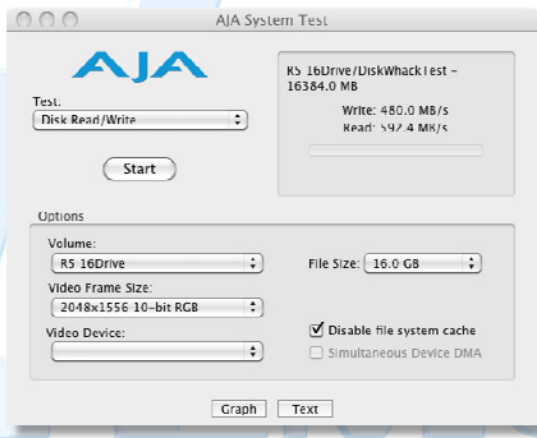


16 Drive's (Single FC RAID Controllers, Dual Port on a Single Q-Logic HBA)

RAID 0

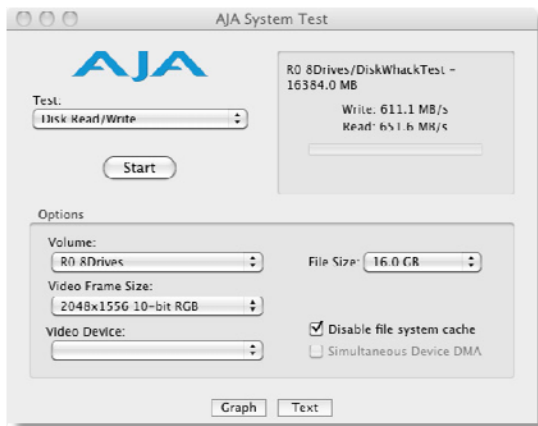


RAID 5

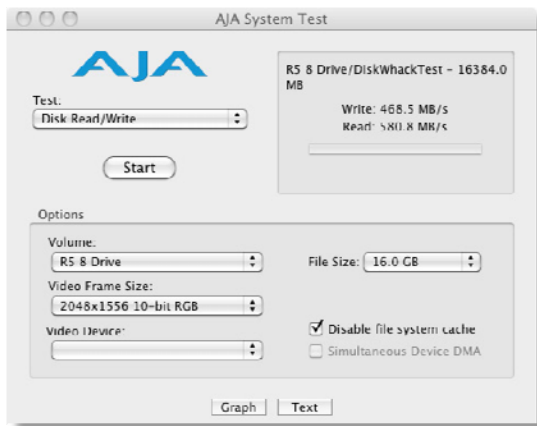


8 Drive's (Dual FC RAID Controller's, Dual Port on a Single Q-Logic HBA)

RAID 0

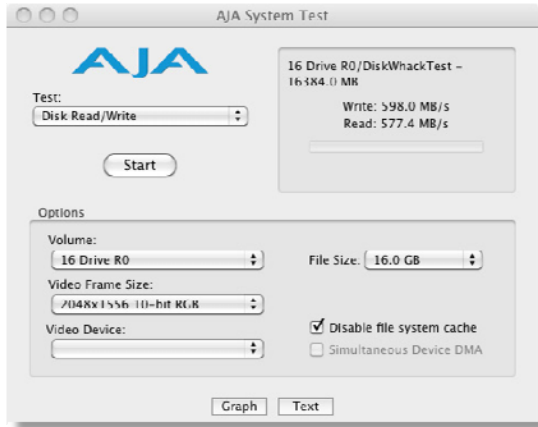


RAID 5

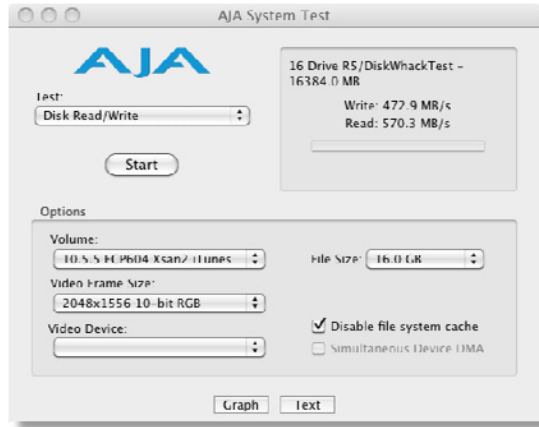


16 Drive's (Dual FC RAID Controller's, Dual Port on a Single Q-Logic HBA)

RAID 0

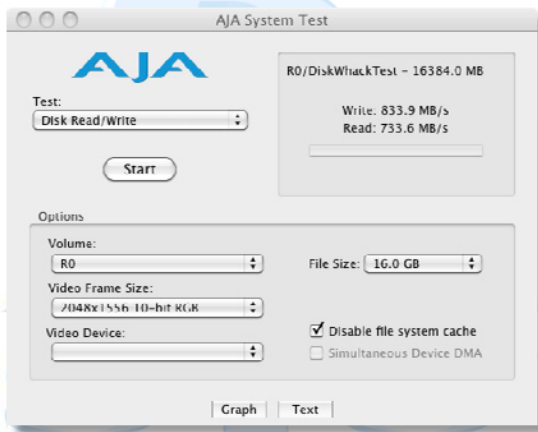


RAID 5

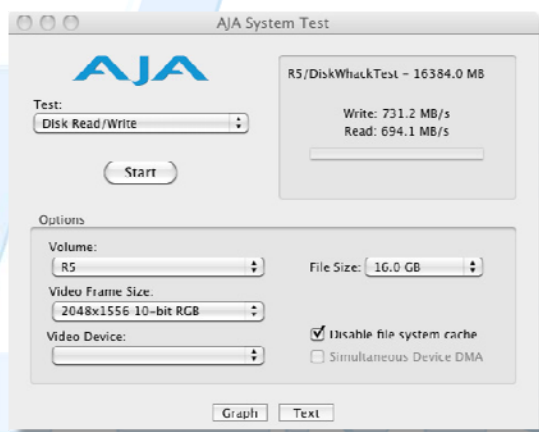


16 Drive's Grouped as one Array (Dual FC RAID Controller's, Dual Port's on two Q-Logic HBA)

RAID 0

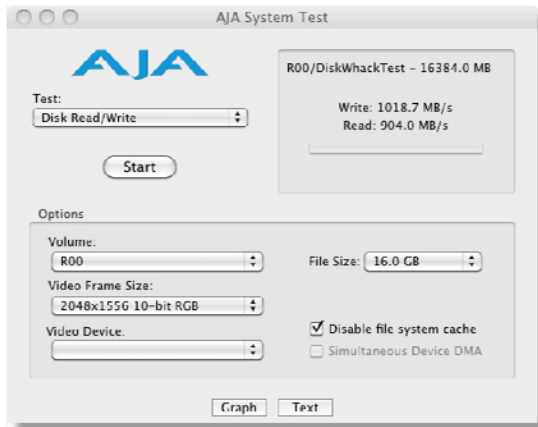


RAID 5



16 Drive's Grouped as two 8 drive Array's (Dual FC RAID Controller's, Dual Port's on two Q-Logic HBA)

RAID 0



RAID 5

